



Do not update more than 10 amplified controllers (10 LA4 or 10 LA8) at the same time.



The current memory used on amplified controllers will be lost. However, the user presets from memory 1 to 10 will be preserved.

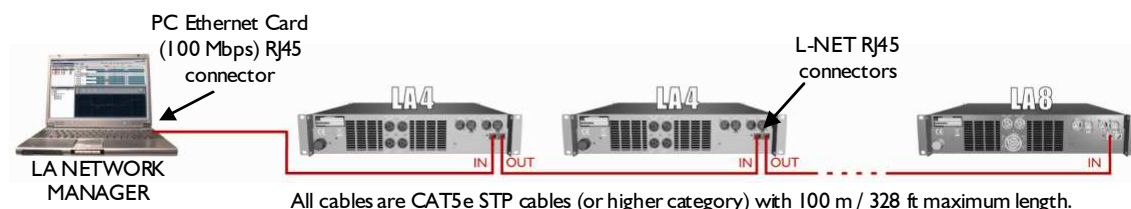


It is possible to load a LA4 Preset Library File (\*.LA4) into a LA8, but it is not possible to load a LA8 Preset Library File (\*.LA8) into a LA4.



This procedure requires the using of a PC with LA Network Manager software installed onto (please see manual)

## 1 Connecting the PC to amplified controllers



**Figure 1: Daisy Chain Network topology**

Others network topologies can be used as Star or Hybrid configuration (please see LA Network Manager software manual).

## 2 PC IP Address setup

Set the PC TCP/IP Address by following the procedure below:

- ✎ In the computer "Start" menu, select "Settings – Network Connections – Local Area Connection".
- ✎ Right click on "Local Area Connection" item and select the "Properties" function in the menu.
- ✎ In the "Local Area Connection Properties" window, double click on the "Internet Protocol (TCP/IP)" item.
- ✎ In the "Internet Protocol properties (TCP/IP)" window, select "Use the following IP address" and type in the IP address = 192.168.1.254 (recommended) and the Subnet mask = 255.255.255.0.
- ✎ Click on the OK tab and close all remaining windows.

### 3 Amplified controller IP Address setup

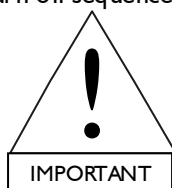
Each controller has to be identified within the Network by its IP Address typically of the format 192.168.1.XXX. To modify the value of the last 3 digits of the IP Address on the selected amplified controller (the other digits are fixed and cannot be changed) follow the procedure below:

- On the controller front panel, press the Encoder Wheel.
- Select the NETWORK ADDRESS menu page by rotating the Encoder Wheel and press the OK tab or the Encoder Wheel.
- Select the desired value from 1 to 253 (recommended) by rotating the Encoder Wheel.



The selected IP Address must be different from those of the PC and other amplified controllers.

- Press the OK tab or the Encoder Wheel to validate the setting.
- Reboot the amplified controller: switch the controller off by pressing the On/Off switch, wait 30 sec for the turn-off sequence to be completed and restart the controller.



The new IP Address won't be effective until the amplified controllers have been rebooted.

### 4 Upload firmware onto amplified controllers

#### 4.1 Launch LA Network Manager software

- Double click on the LA NETWORK MANAGER shortcut located on the desktop (if created), or select "Programs – LA Network Manager – LA Network Manager" in the computer "Start" menu: a window is displayed and invites the user for selecting between three possible ways for editing a system. Select the "Retrieve System from Network" option.

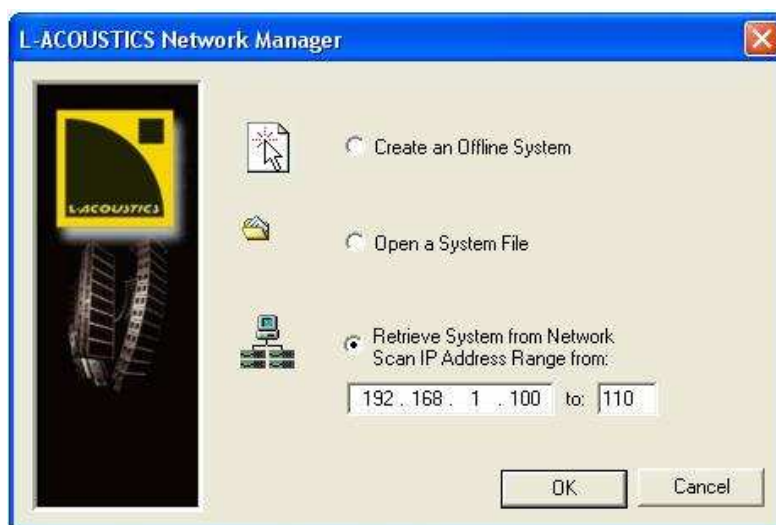


Figure 2: Launch window

- Click on OK for retrieving the amplified controllers from Network.



Figure 3: Scanning network

Units Over Network					
Load		Store		Name	
PRESET			CONFIG		
No.	Addr.	Type	Preset	Family	
1	100	LA4	*03: KIVA	KIVA	
2	101	LA8	46: SB218_X	SB218	
3	102	LA8	46: SB218_X	SB218	
4	103	LA8	46: SB218_X	SB218	
5	104	LA8	46: SB218_X	SB218	
6	105	LA8	46: SB218_X	SB218	
7	106	LA8	46: SB218_X	SB218	

Figure 4: Example with 1 LA4 and 7 LA8 retrieved

## 4.2 Upload preset library file

- First download the desired Firmware File from the L-ACOUSTICS website.
- Unzip the downloaded file.
- Click on the "Options" tab **Command Toolbar**, position the mouse cursor on the **Update** function. In the new displayed submenu, click on the **Preset Library** function.

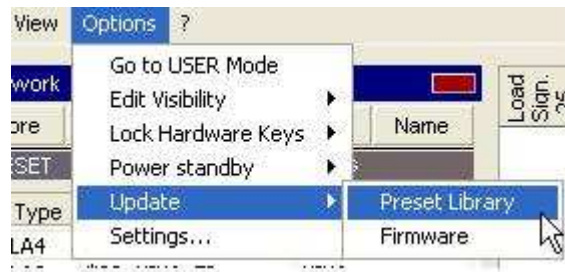
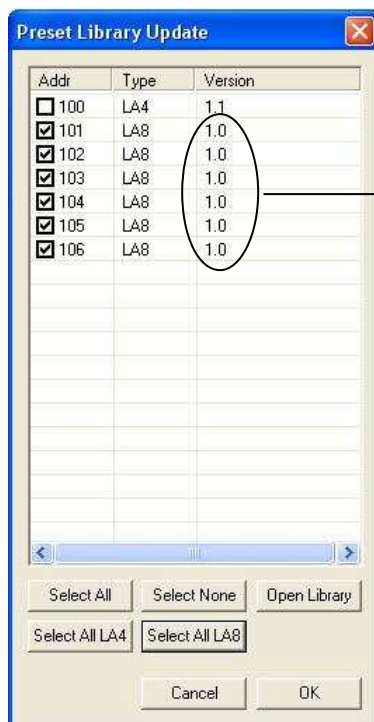


Figure 5: Preset Library function

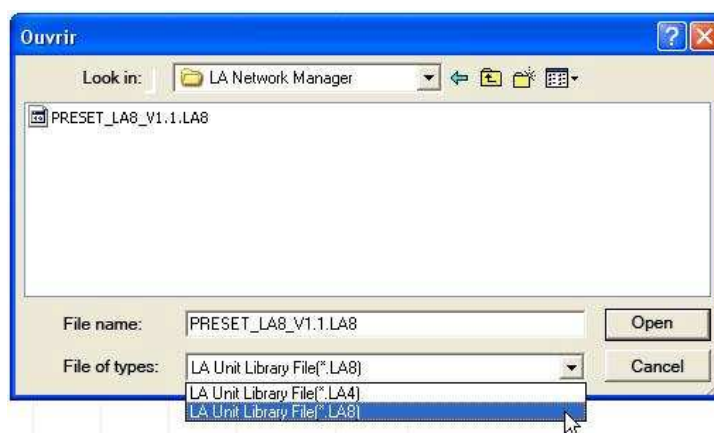
- Select the amplifier controllers that need to be update and click on **Open Library**



This column shows the current preset library version

**Figure 6: Selection of amplified controllers to update**

- Choose the LA8 type of the preset library file (or \*.LA4), select the file and click on Open then on OK.



**Figure 7: Preset Library file**

- Click on Yes.



**Figure 8: Warning message**

# LA4-LA8 AMPLIFIED CONTROLLER PRESET LIBRARY UPDATE PROCEDURE SEPTEMBER 2007

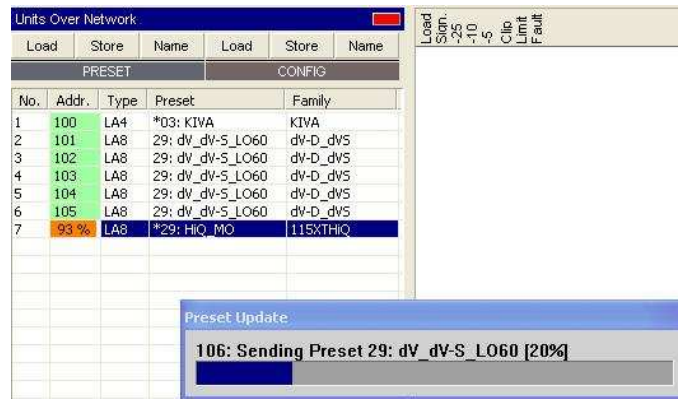


Figure 9: Library preset update on going



Figure 10: End of update



If a disconnection occurs during the uploading, the procedure must be done again from the beginning.